



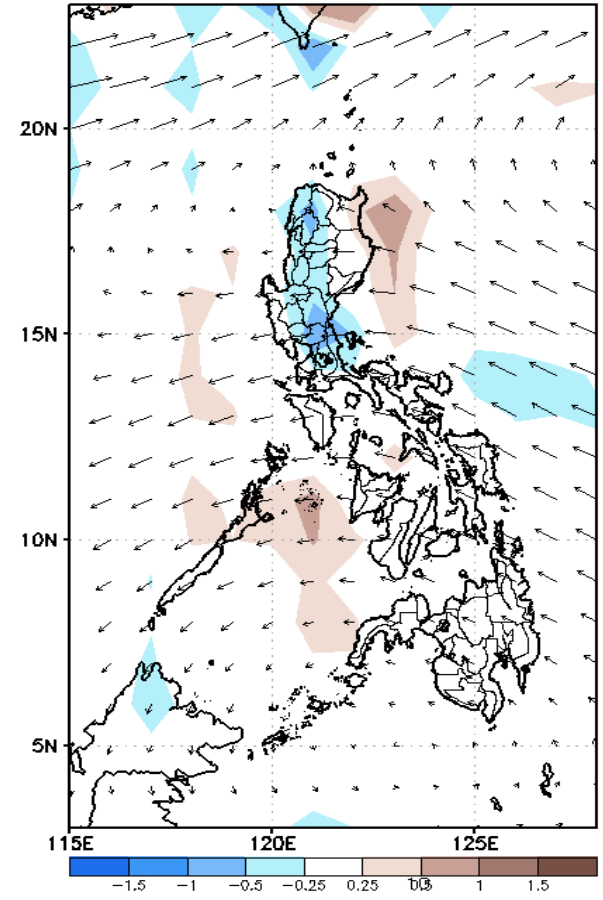
Week 1 & Week 2 Forecast for the Philippines using GEFS Model



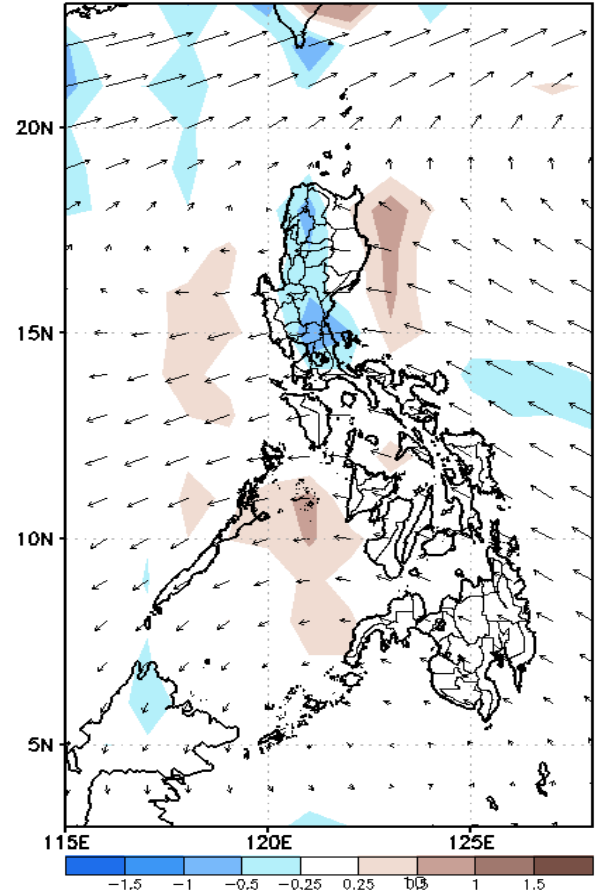
GEFS Week-1 Forecasts: Wind Anomaly Forecast

Week 1: Jan 13-19, 2023

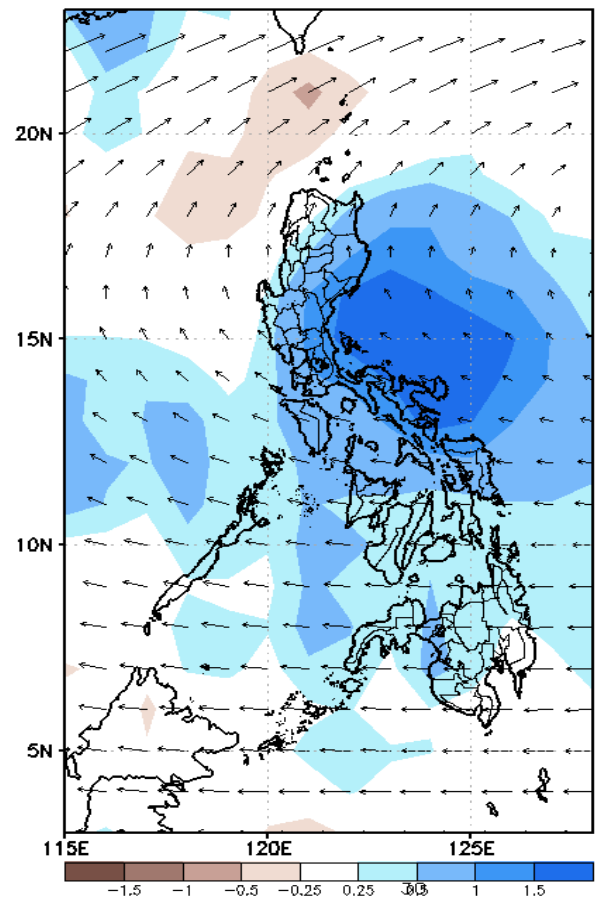
GEFS Week-1 850-hPa Divergence and Wind Anomr
Valid: 20230113 - 20230119



GEFS Week-1 700-hPa Divergence and Wind Anomr
Valid: 20230113 - 20230119



GEFS Week-1 200-hPa Divergence and Wind Anomr
Valid: 20230113 - 20230119

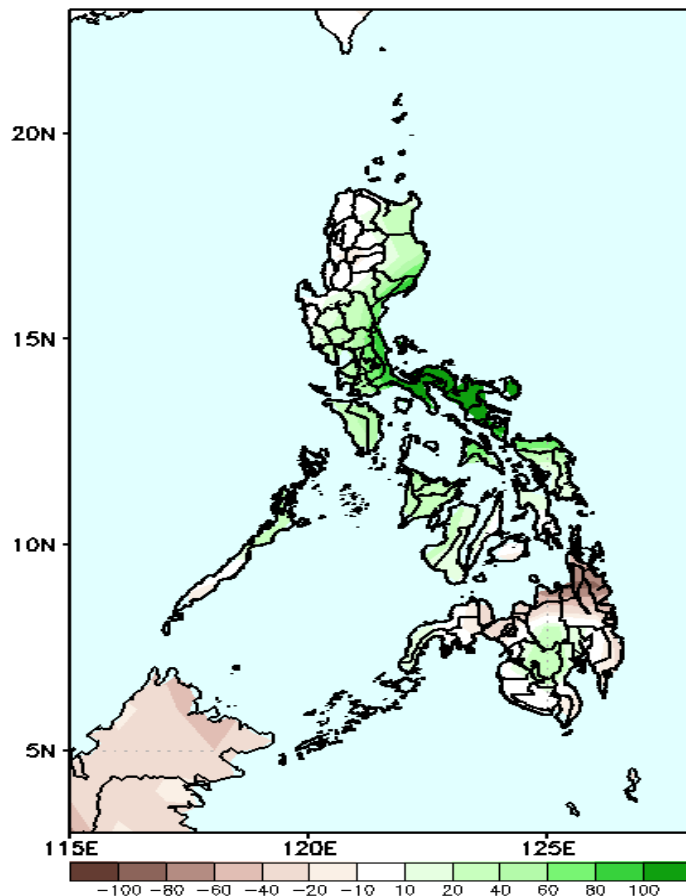


Northeast Monsoon affecting most parts of Luzon; Easterlies affecting Visayas and Mindanao during the forecast period.

Precipitation Anomaly and Exceedance Probability > 25/50 mm

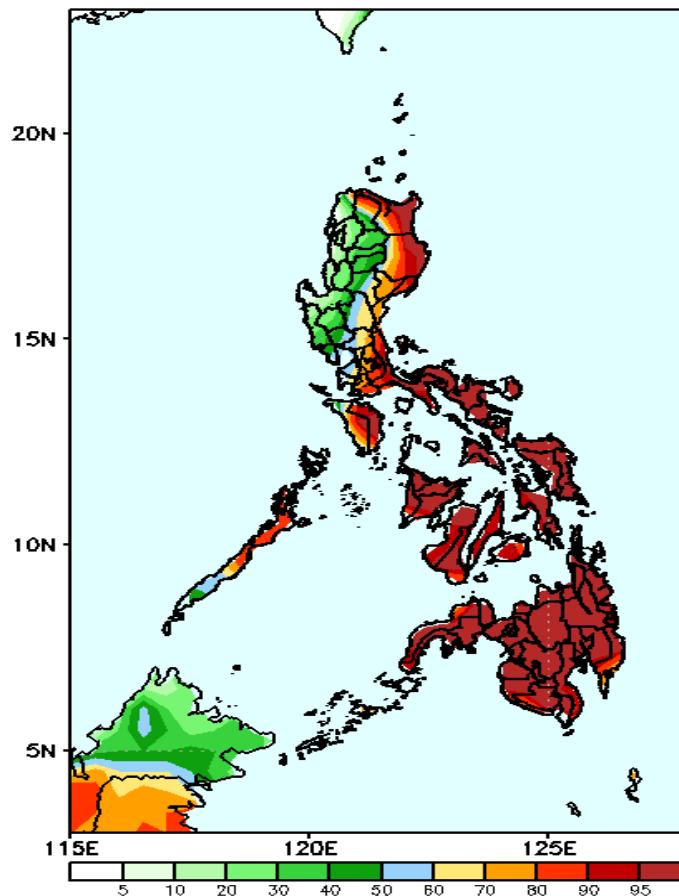
Week 1: Jan 13-19, 2023

GEFS Week-1 Precip Anomaly
Valid: 20230113 - 20230119



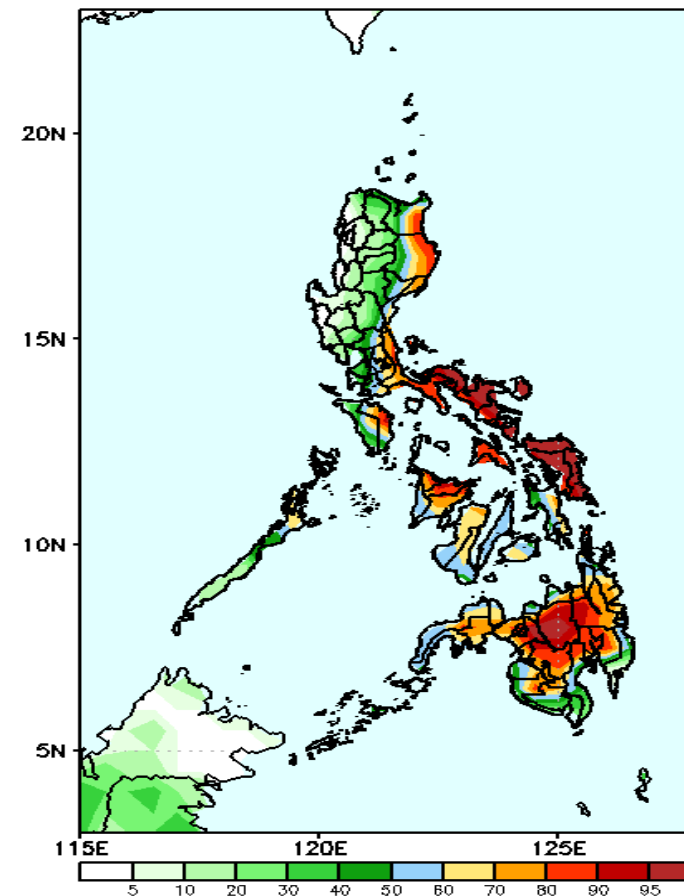
Increase of rainfall of more than 100mm is expected in most parts of Quezon and Bicol Region, 40-80mm in eastern, central and southern parts of Luzon, most of Visayas and some areas in central Mindanao while 60-90mm rainfall deficit in Misamis Oriental & CARAGA Region.

GEFS Week-1 Exceedance Prob. > 25mm
Valid: 20230113 - 20230119



High probability of rainfall to exceed 25mm in most parts of the country except in Ilocos Region, CAR (except Apayao), and western parts of Central Luzon during the forecast period.

GEFS Week-1 Exceedance Prob. > 50mm
Valid: 20230113 - 20230119

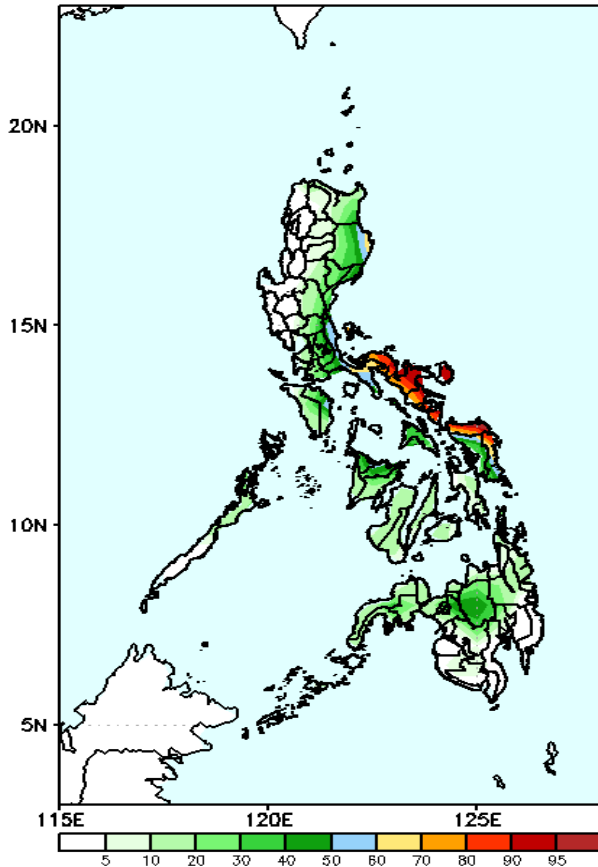


High probability of rainfall to exceed 50mm in most parts of Cagayan, Isabela, Aurora, CALABARZON, Bicol Region, Or. Mindoro, Visayas and Mindanao while less likely for the rest of Luzon and some areas in southern Mindanao during the forecast period.

Exceedance Probability > 100/150/200 mm

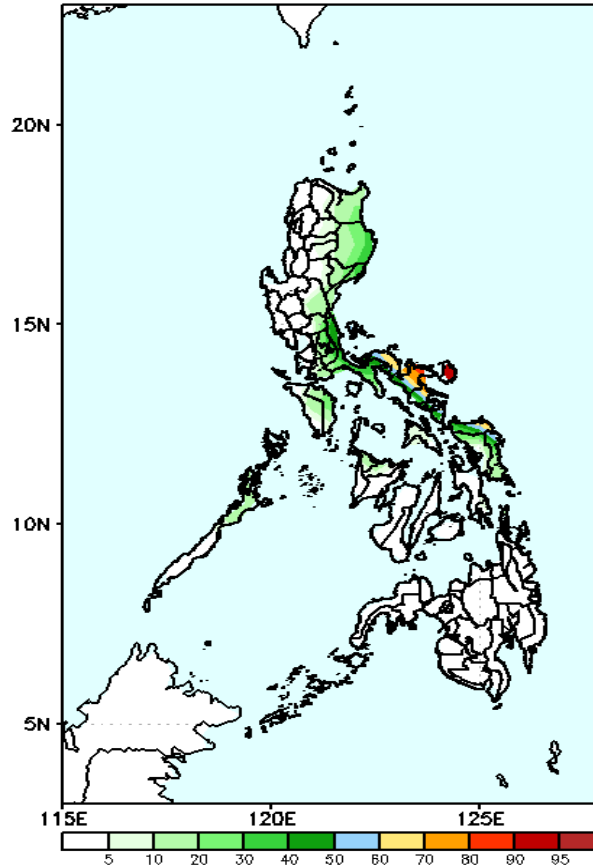
Week 1: Jan 13-19, 2023

GEFS Week-1 Exceedance Prob. > 100mm
Valid: 20230113 - 20230119



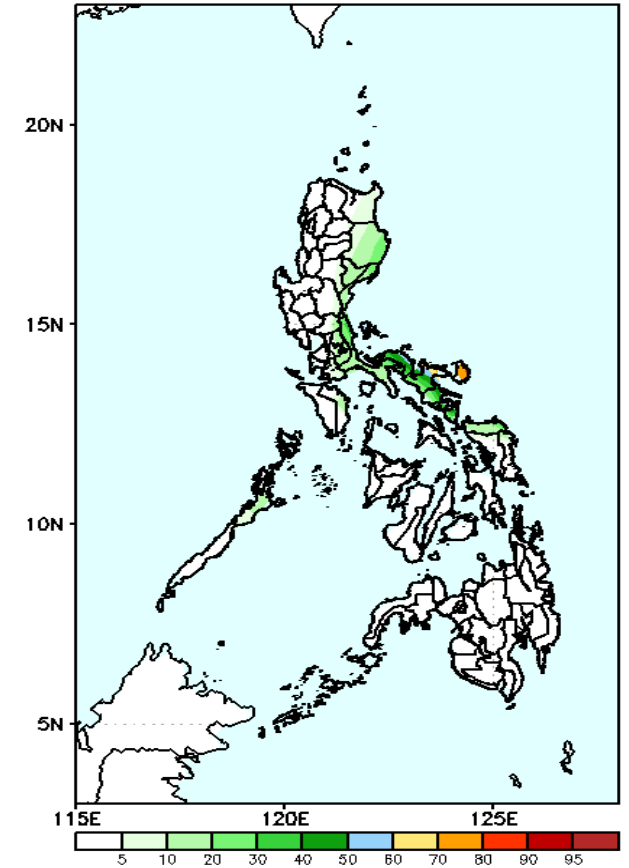
High probability of rainfall to exceed 100mm in most parts of Bicol Region and northern parts of Samar while less likely for the rest of the country during the forecast period.

GEFS Week-1 Exceedance Prob. > 150mm
Valid: 20230113 - 20230119



60-90% probability of rainfall to exceed 150mm in Camarines Norte & Sur and Catanduanes while less likely for the rest of the country during the forecast period.

GEFS Week-1 Exceedance Prob. > 200mm
Valid: 20230113 - 20230119

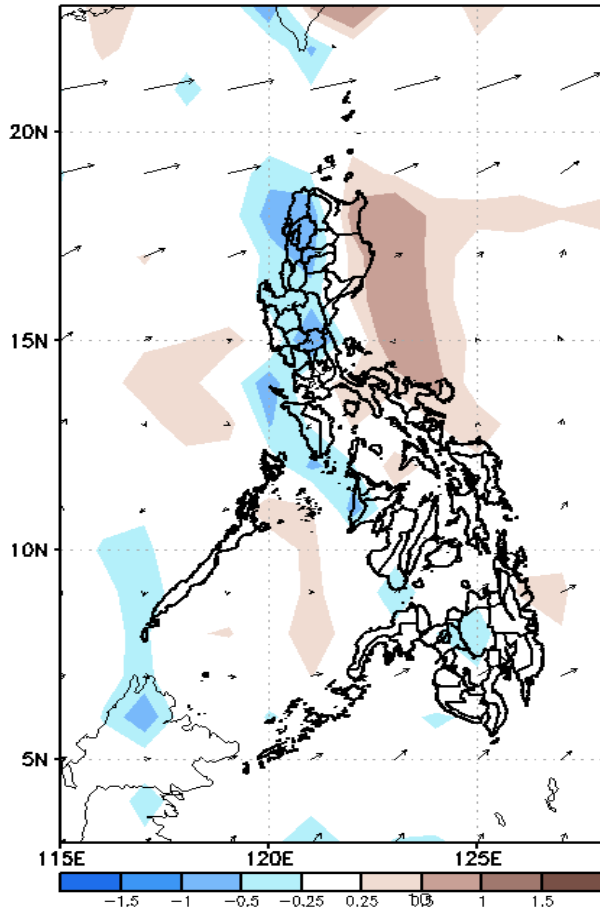


Low probability of rainfall to exceed 200mm in most parts of the country except in Camarines Sur & Catanduanes where there 70-80% chance during the forecast period.

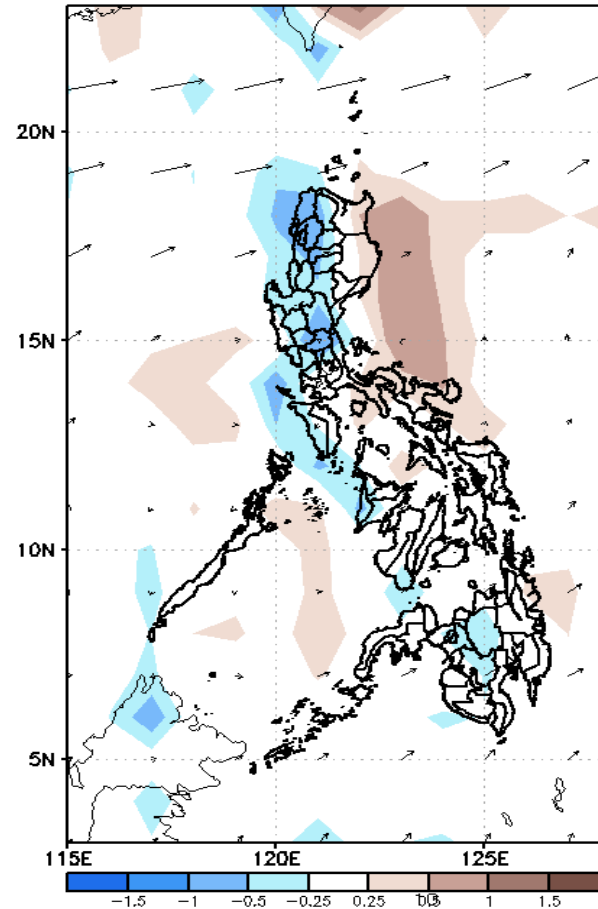
GEFS Week-2 Forecasts: Wind Anomaly Forecast

Week 2: Jan 20-26, 2023

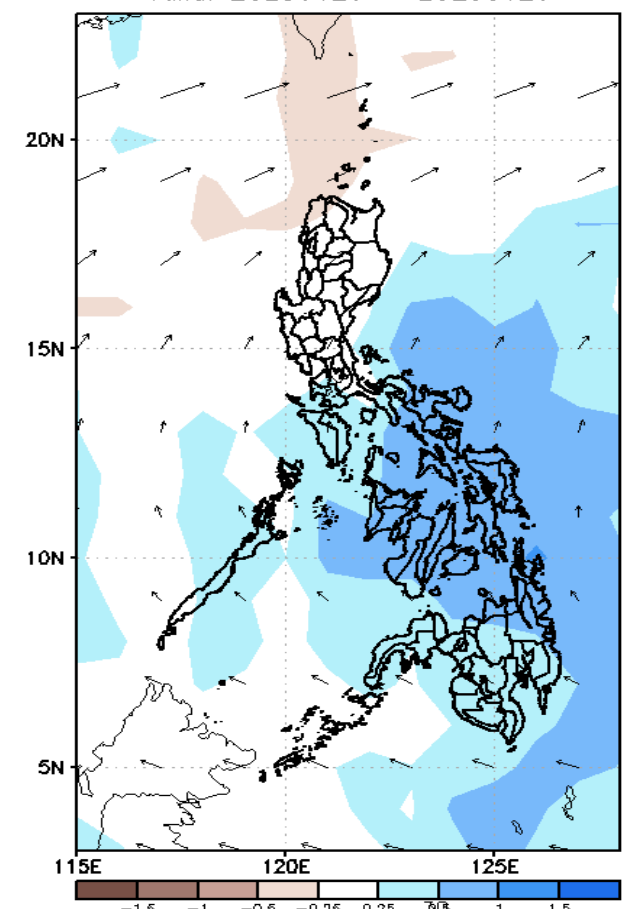
GEFS Week-2 850-hPa Divergence and Wind Anom
Valid: 20230120 - 20230126



GEFS Week-2 700-hPa Divergence and Wind Anom
Valid: 20230120 - 20230126



GEFS week-2 200-hPa Divergence and Wind Anom
Valid: 20230120 - 20230126



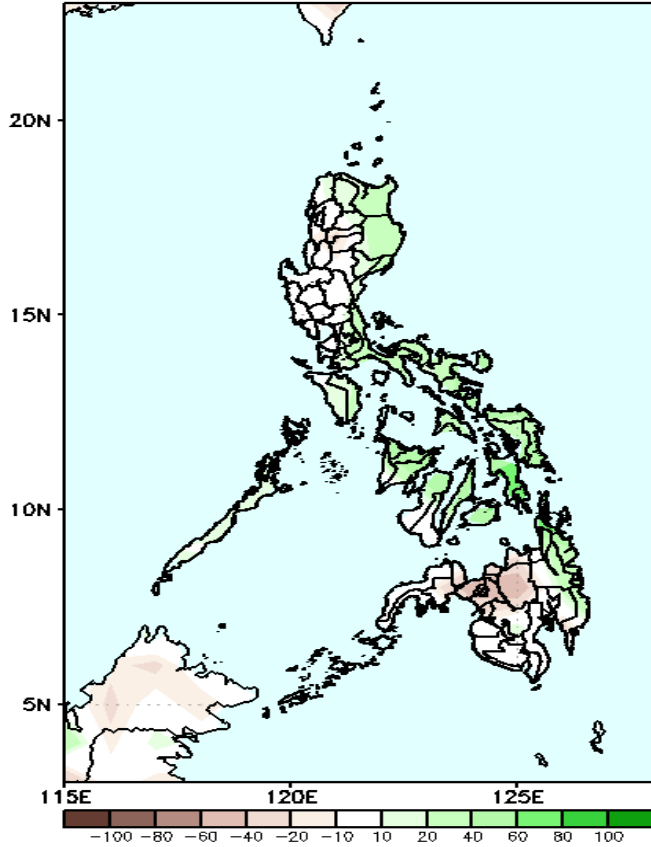
Northeast Monsoon is forecasted to affect most parts of Luzon and eastern Visayas while Easterlies to affect Mindanao during the forecast period.



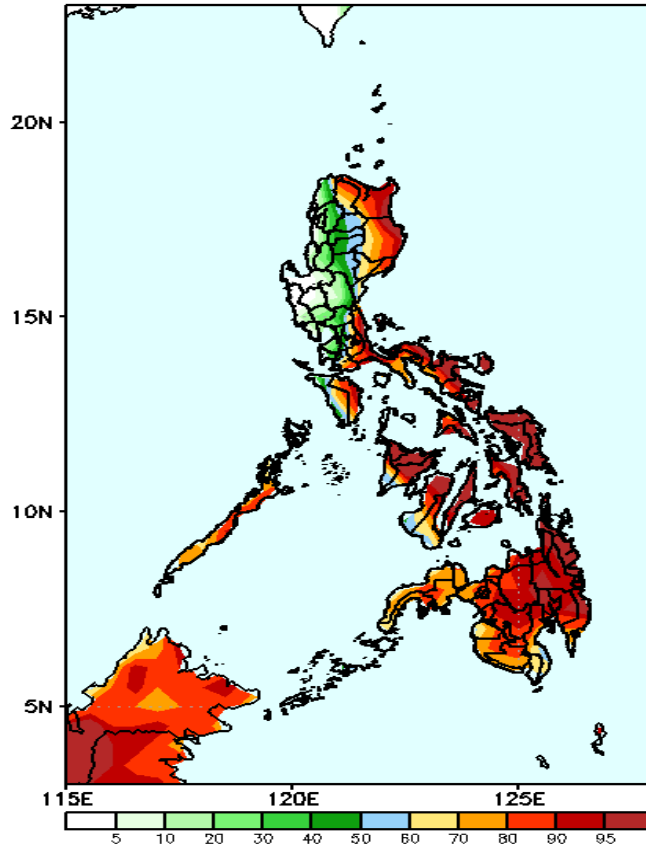
Precipitation Anomaly and Exceedance Probability > 25/50 mm

Week 2: Jan 20-26, 2023

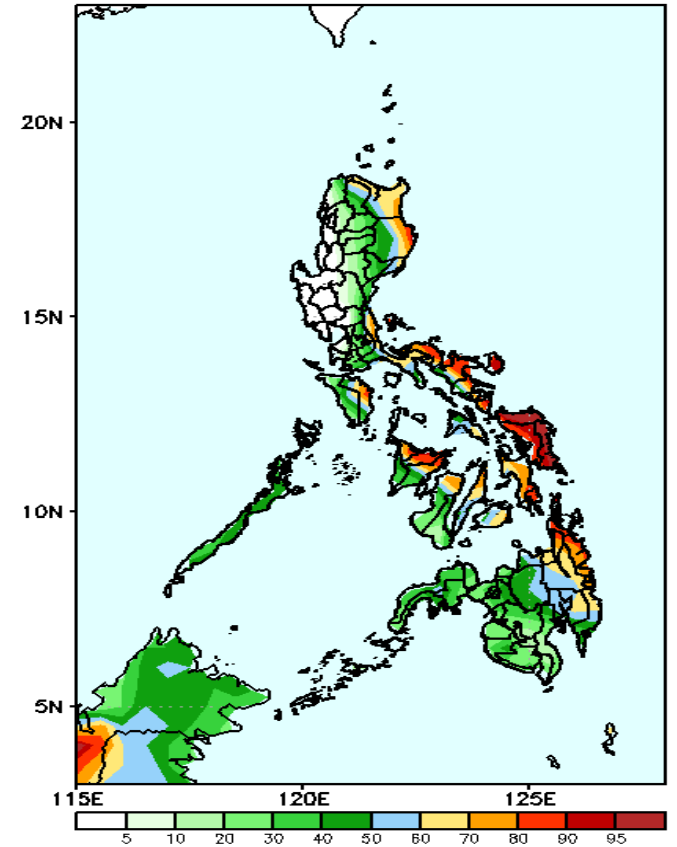
GEFS Week-2 Precip Anomaly
Valid: 20230120 - 20230126



GEFS Week-2 Exceedance Prob. > 25mm
Valid: 20230120 - 20230126



GEFS Week-2 Exceedance Prob. > 50mm
Valid: 20230120 - 20230126



Increase of rainfall of 40-80mm is expected in Cagayan, Isabela, most parts of southern Luzon, Bicol Region, Visayas and eastern Mindanao while 20-60mm rainfall deficit in Bukidnon and Lanao provinces during the forecast period.

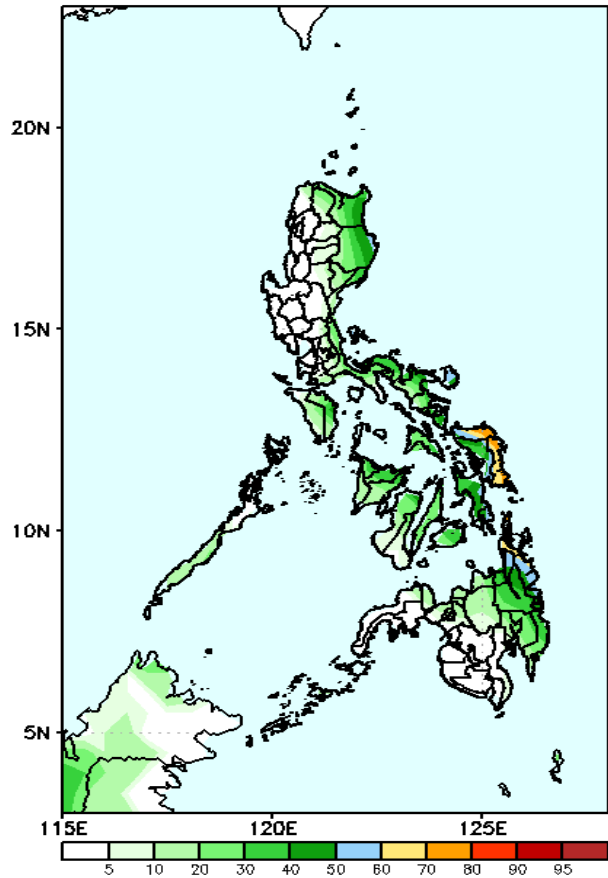
High probability of rainfall to exceed 25mm in most parts of the country except Ilocos Region, most part of CAR & Central Luzon and CALABAR during the forecast period.

High probability of rainfall to exceed 50mm in eastern parts of Cagayan and Isabela, Aurora, Or. Mindoro, most parts of Bicol Region,, Eastern & Central Visayas, Aklan, Capiz, northern part of Negros Island and western Mindanao while less likely for the rest of the country during the forecast period

Exceedance Probability > 100/150/200 mm

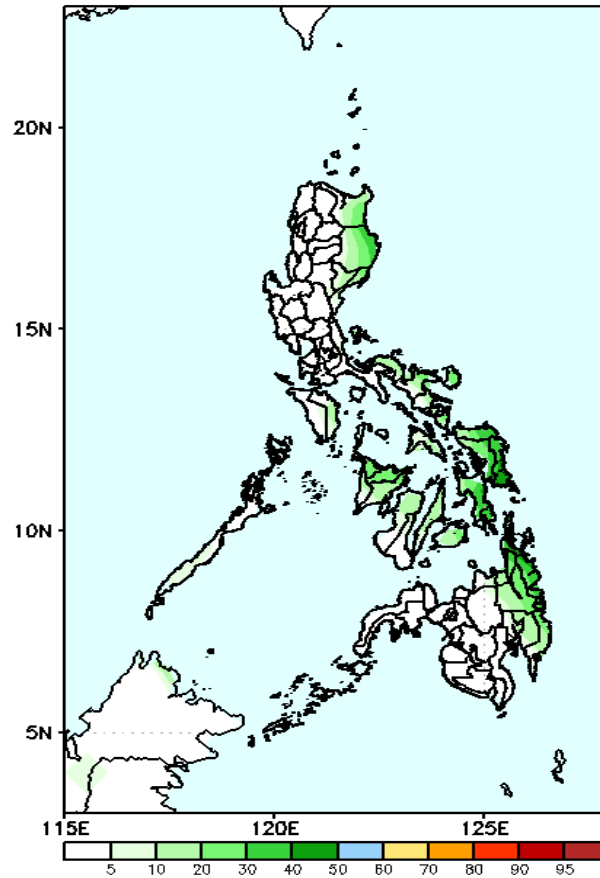
Week 2: Jan 20-26, 2023

GEFS Week-2 Exceedance Prob. > 100mm
Valid: 20230120 - 20230126



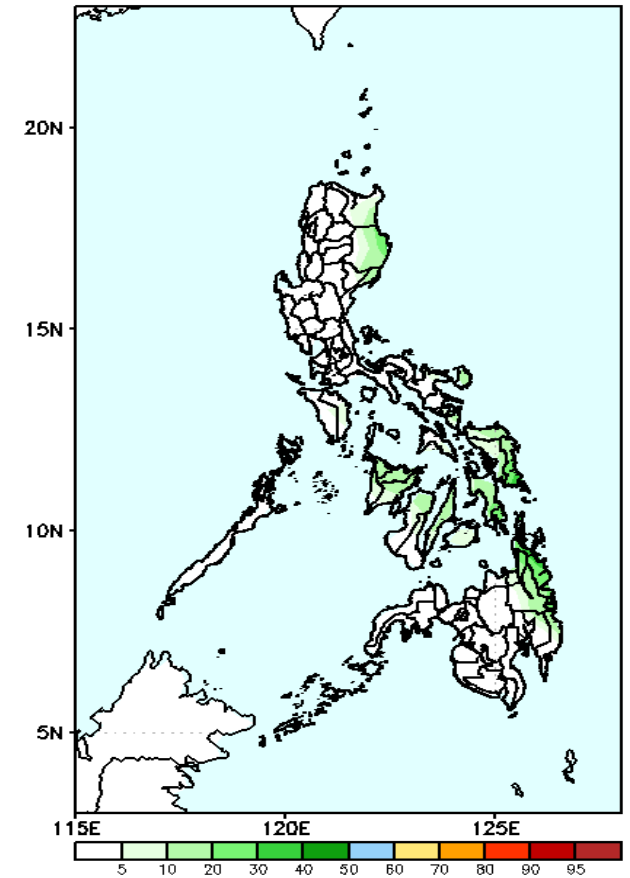
Low probability of rainfall to exceed 100mm in most parts of the country except in Eastern & Northern Samar and Surigao del Norte where there is 70-80% chance during the forecast period.

GEFS Week-2 Exceedance Prob. > 150mm
Valid: 20230120 - 20230126



Low probability of rainfall to exceed 150mm in most parts of the country during the forecast period.

GEFS Week-2 Exceedance Prob. > 200mm
Valid: 20230120 - 20230126

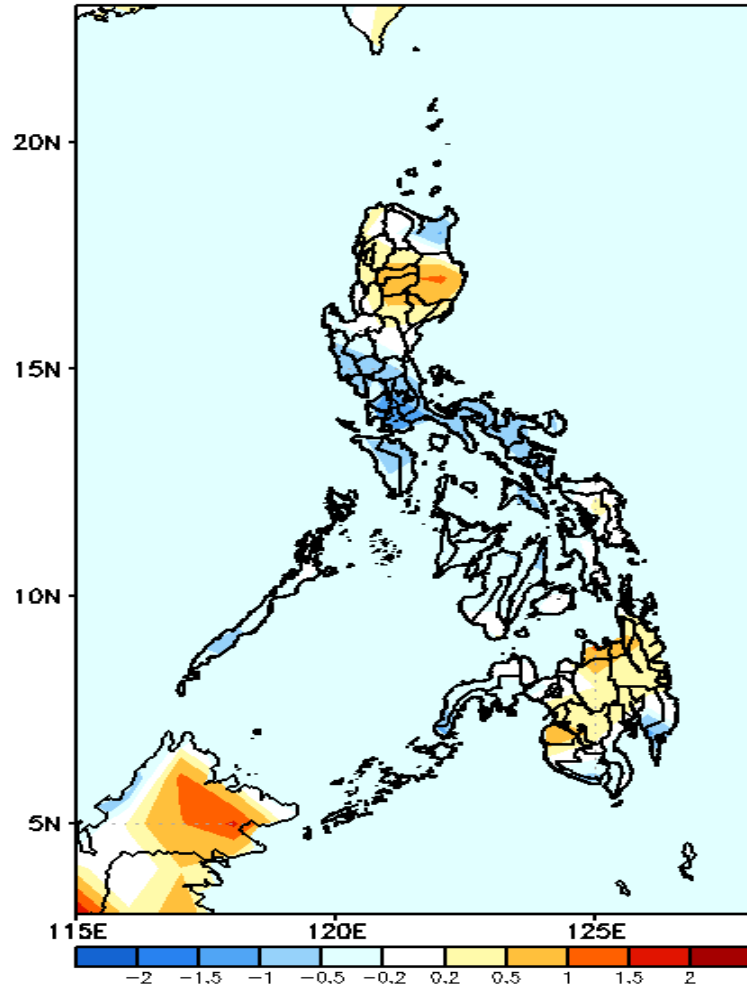


Low probability of rainfall to exceed 200mm in most parts of the country during the forecast period.



GEFS Week-1 & 2 Forecasts: T2m Anomaly

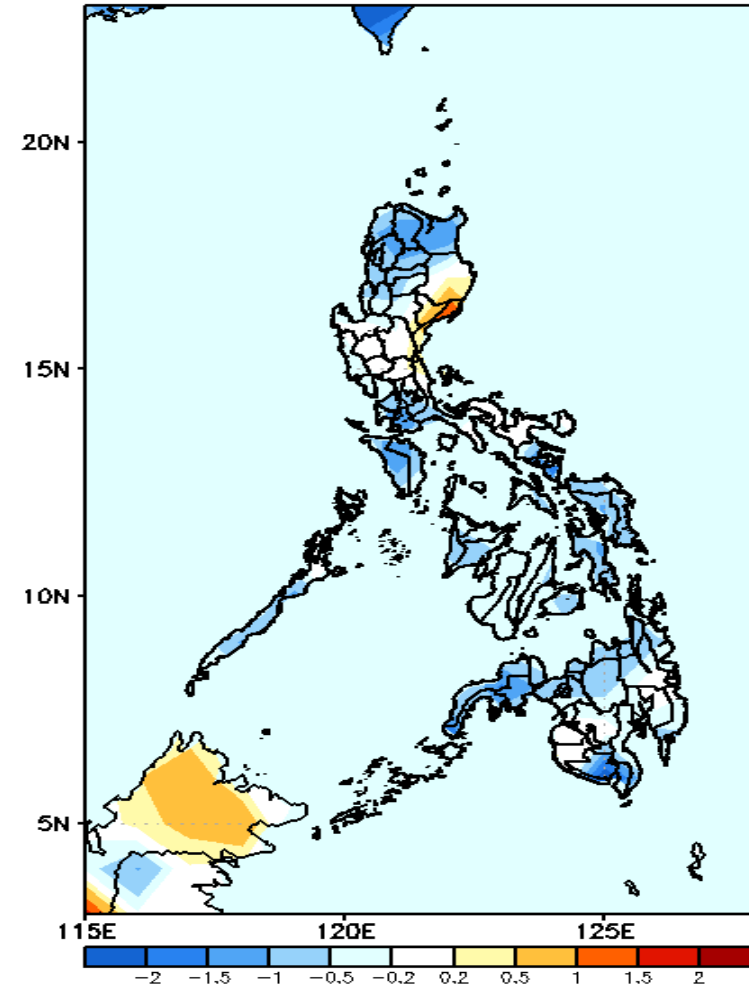
GEFS Week-1 T2m Anomaly
Valid: 20230113 - 20230119



2m Temperature Week 1: Jan 13-19, 2023

Average to cooler than average surface air temperature will likely experience in most parts of Luzon and Visayas, Zamboanga Peninsula and southern Mindanao while slightly warmer to warmer temperature is expected in Isabela, CAR, and rest of Mindanao during

GEFS Week-2 T2m Anomaly
Valid: 20230120 - 20230126



2m Temperature Week 2: Jan 20-26, 2023

Average to cooler than average surface air temperature will likely experience in most parts of the country except in Quirino & Aurora where slightly warmer to warmer temperature is expected during the forecast period.